

TRAILER TRACKING



Keep Tabs on All of Your Trailers

The OneView platform offers user-friendly, web-based trailer tracking applications that allow companies to know the location, current temperature, and actual usage of their trailers.

Benefits



Real-time Visibility

Deliver accurate estimates with location tracking



Increase Trailer Utilization

Identify trailer usage with automated dormancy and utilization reports



Minimize Trailer Loss

Receive a text or email alert if a trailer leaves a pre-defined geographical area, reducing equipment loss



Decrease Maintenance Costs







Schedule usage-based maintenance, extending trailer life and eliminating unnecessary maintenance costs

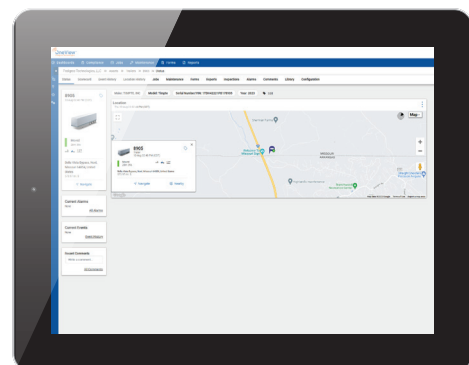


Prevent Loss of Goods

Receive a text or email alert when the trailer's temperature goes out of an acceptable range

Key Features

-  Easy Install
-  Compact and Rugged Design
-  Locate your trailer in seconds
-  Long Lasting Rechargeable Battery
-  Temperature Monitoring
-  Solar Tracking (optional)



OneView™ Solutions

The OneView™ platform provides fleet and equipment operators with the most robust, reliable and expansive features to help reach the most aggressive competitive advantage in today's complex and increasingly costly commercial and industrial environments.

Truck, Trailer & Asset Management



ASSET TRACKING

Track your assets' locations to prevent theft and optimize your operations.

EQUIPMENT MANAGEMENT

Manage equipment location, utilization and diagnostics and optimize your assets.

REEFER MANAGEMENT

Remotely track, monitor, and control the temperature of refrigerated trucks, trailers, or shipping containers with all major OEM makes and models.

TRAILER TRACKING

Track and monitor trailer location and utilization to maximize your fleet efficiency.

TANK-LEVEL MONITORING

Automate your business processes and prevent costly overtime by remotely tracking, monitoring, and receiving up-to-date alerts on bulk tank fluid levels.

Safety & Compliance



CAMERAS

Improve driver behavior with AI-based incident detection and in-cab feedback, improving safety trends and protecting you with video evidence including external cameras.

DVIR & INSPECTIONS

Inspect your assets quickly and easily with an app – capturing defects with images and tracking repairs.

ELD & COMPLIANCE

Our US and Canada certified ELD compliant solution makes HOS management easy, with real-time compliance visibility.

Enhanced Fleet Solutions



DISPATCHING & LOGISTICS

Communicate task assignments in real-time to mobile workers through customized workflows, routing, electronic forms and two-way messaging.

ELECTRONIC FORMS

Eliminate paper and process critical data more quickly, reducing time to invoice and improving accuracy.

FLEET MANAGEMENT

Manage your fleet vehicles and drivers in real-time with location, utilization, diagnostics, scorecards and more.

FLEET MAINTENANCE

Leverage asset data to schedule maintenance work, easily analyze trends, spot recurring problems, and reduce downtime and costly repairs.

TIRE PRESSURE MONITORING

Monitor tire pressure and temperature, promoting better fuel efficiency, safety, and vehicle performance.

WEIGH STATION & TOLL BYPASS

Drivewayze enables commercial truck drivers to bypass weigh stations, saving time and money.

ROUTING

Optimize driving routes and get more done in less time, reducing fuel consumption and maximizing efficiency.

NAVIGATION

In-cab turn-by-turn navigation with voice-guided directions to desired destinations, real-time traffic alerts, detours, ETA's and more.

DIGITAL LIBRARY

Store, manage and remotely access documents, images and other files, from anywhere.

Integrations



API INTEGRATIONS

Create a seamless user experience with 3rd party software and streamline business processes, saving time and reducing errors.

OEM DATA

Vehicle and equipment OEM data plus all operations in one platform.

SENSOR DATA

Add-on sensors for increased visibility to temperature, humidity, on/off, open/closed status and more.